



**RHAM**  
EQUIPMENT

## **RHAM UNDERGROUND DUMP TRUCK**

MODEL 23DT

SPECIFICATION SHEET



# TECHNICAL SPECIFICATIONS OF EQUIPMENT

## SPECIFICATIONS

### 23DT, 23Ton Underground Dump Truck

Payload	23 000 kg
---------	-----------

## ENGINE OPTIONS

Standard	
Option 1: Engine	Deutz 914C Air Cooled
Power rating	114Kw at 2300 rpm
Option 2: Engine	John Deere Water Cooled
Power Rating	138Kw at 2400Rpm

## OPERATOR COMPARTMENT

ISO ROPS and FOPS certified side seated operators compartment.

Pilot operated joystick for steering.

Door interlock disabling steering boom and bucket functions.

Non-Clutter Display

2 x Full HD Colour Monitors

Extended Leg Room

Comfortable Suspension T-Back Seat (Various Options)

### Optional:

Enclosed Climate-Controlled Cabin.

Metal Grid Enclosed Canopy

## ELECTRICAL SYSTEM

Automatic Brake Test Function

System Voltage: Start & Accessories 24 V

### Hydraulic Warning System:

Tank Low Level

Transmission Low Level

Temperature Indicator

LED Lights

Main Power Isolation Lockout Switch

Amber Strobe Light – Power On

Audio-Visual Reverse Alarm

Controls and Instruments

## SYSTEMS

### Fire protection and detection systems available:

- Ansul Fire Detect
- Fogmaker Fire Protection

Central Manual Lubrication

Electric fill pump for hydraulic oil.

Fire Extinguisher – 2 x 6 kg Standard

Air Conditioner

RRC (Line of sight Radio Remote Control)

## DRIVETRAIN

Hydrostatic 4-wheel drive consisting of a main piston pump supplying 4 individual wheel motors.

SAHR, Oil Submersed braking systems on all four wheels.

Integrated Park Brake

Emergency Brake

Compliance to SANS 1589 of 1994

## TYRES

Tyre Size: 17.5R25 Mining Slicks

Tubeless - Mine Slicks

Foam Fill Compatible

Inverted Rim Guards

\* As applications and conditions vary, Rham Equipment recommends that the user consults with tyre suppliers to obtain the optimum tyre selection.



# BACKGROUND

Rham Equipment is a Level 3 B-BBEE (Pty) Limited Company, formed in 1980 to produce specialised equipment for the underground coal mining industry in South Africa. To date, we have supplied over 2000 units to the mining industry, in both the hard rock and coal sectors.

Our product range has been extended to include load haul dumpers, face drilling rigs, long hole drill rigs, dump trucks and roofbolters. For the material handling section of the underground mining industry, we produce hydrostatic belt conveyor drives, material transporters that include scissor lifts, explosive carriers and material cars, all built to our customer specifications. These can be of fixed design or on a cassette principle design.

The Rham head office and the modern factory is conveniently situated approximately 15km North of OR Tambo International Airport in the province of Gauteng South Africa and is in close proximity to the entire major road and highway network.

## SUPPLY SUPPORT

- Financing & Insurance options
- The speed of manufacturing and supply (Delivery times and cost (ROI))
- ISO 9001 compliant
- Rental options
- 24 Hour service and technical support
- Ready for the internet of things 4.0 (new technologies)

Safe, Productive, 23-ton Hydrostatic Driven, Articulated Underground Dump Truck with Oscillating Centre Section for challenging mining conditions. The Rham 23DT comes with a ROPS/FOPS canopy and is PDS compliant. A flame proof model is available.

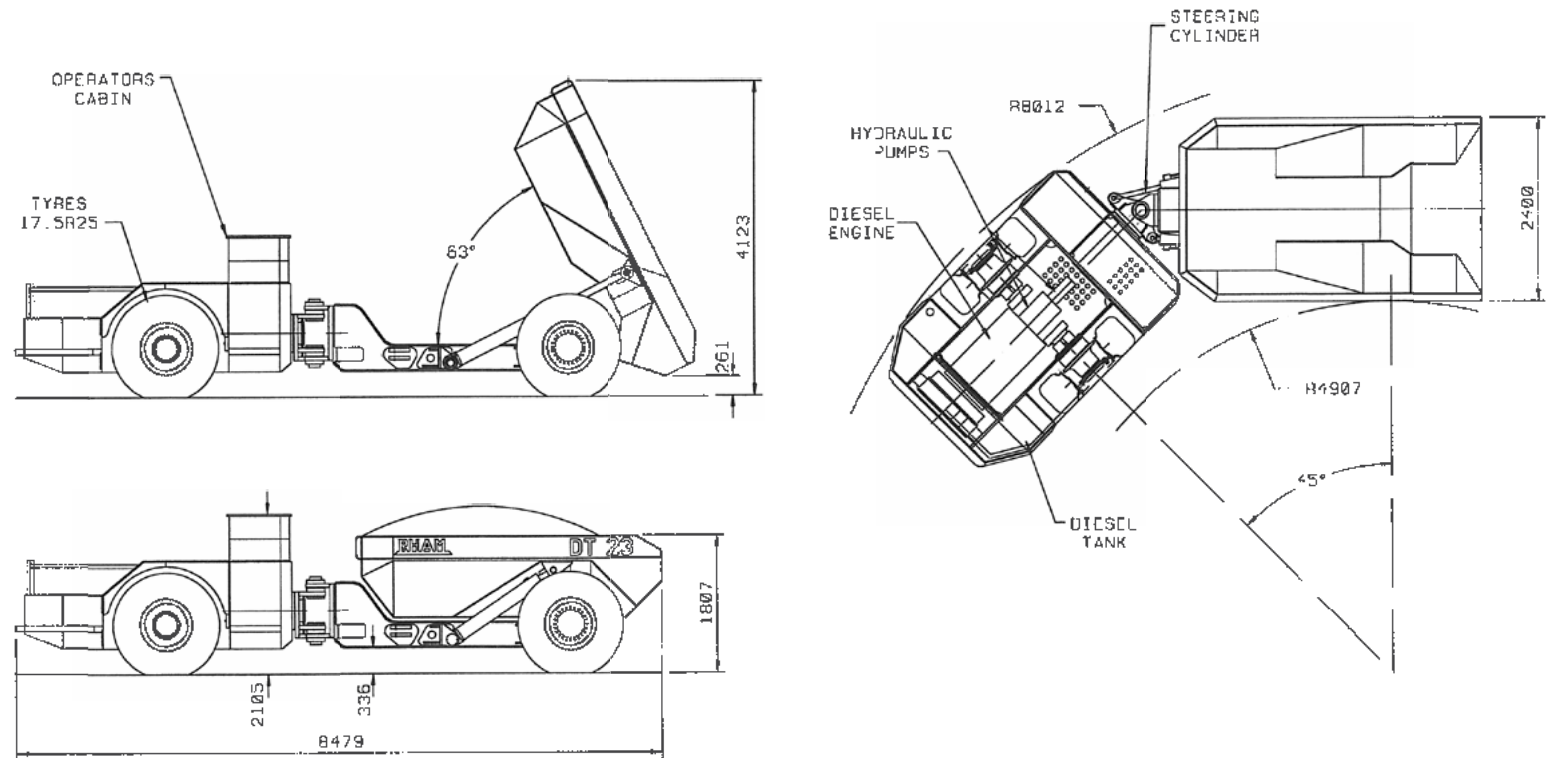
### INTEGRATED VALUE:

#### Safety:

- Rham 23DT are capable of reacting to all Proximity Detection System signals without any stress on the LHD engine and drive train. This include crawl and stop functions.
- The Rham 23DT has a spacious ROPS/FOPS operator's cabin.
- A rear-view camera with full colour display is an available option.

### EFFICIENCY:

- Drive Train Simplicity is achieved by utilizing Hydrostatic Technology
- Optimal power transmission from Engine to wheels is achieved by utilizing hydrostatic wheel motors on each wheel.
- The engine power a hydraulic pump that supply high pressure flow to the individual wheel motors.
- Rham Hydrostatic driven Dump Trucks are deprived of troublesome Axles, Prop-Shafts, Torque Converters, Transmissions and Up-Boxes. Privation of these mechanical components results in a powerful, cost effective and productive Dump Truck.
- Parts Similarity
- The DT 23, DT 32 and 30HD have common Engines, Wheel Motors and Hydraulic Pumps. This reduces stock keeping drastically.







## CONTACT US

### RHAM EQUIPMENT (PTY) LTD

7 Axle Road, Clayville Ext 11,  
Olifantsfontein, 1666

-25.965890, 28.223250

+27 (0) 11 203 7900

[www.rham.co.za](http://www.rham.co.za)

[info@rham.co.za](mailto:info@rham.co.za)

